

ZERION REIMAGINED



Conversational Data Collection and AI-Driven Automation in Field Service



Sze Wong
CEO



Joe Vetoe
Product Manager



powered by

POLL



Digital Transformation

Web / Mobile
UI



Server



DB /
Backend



Agent



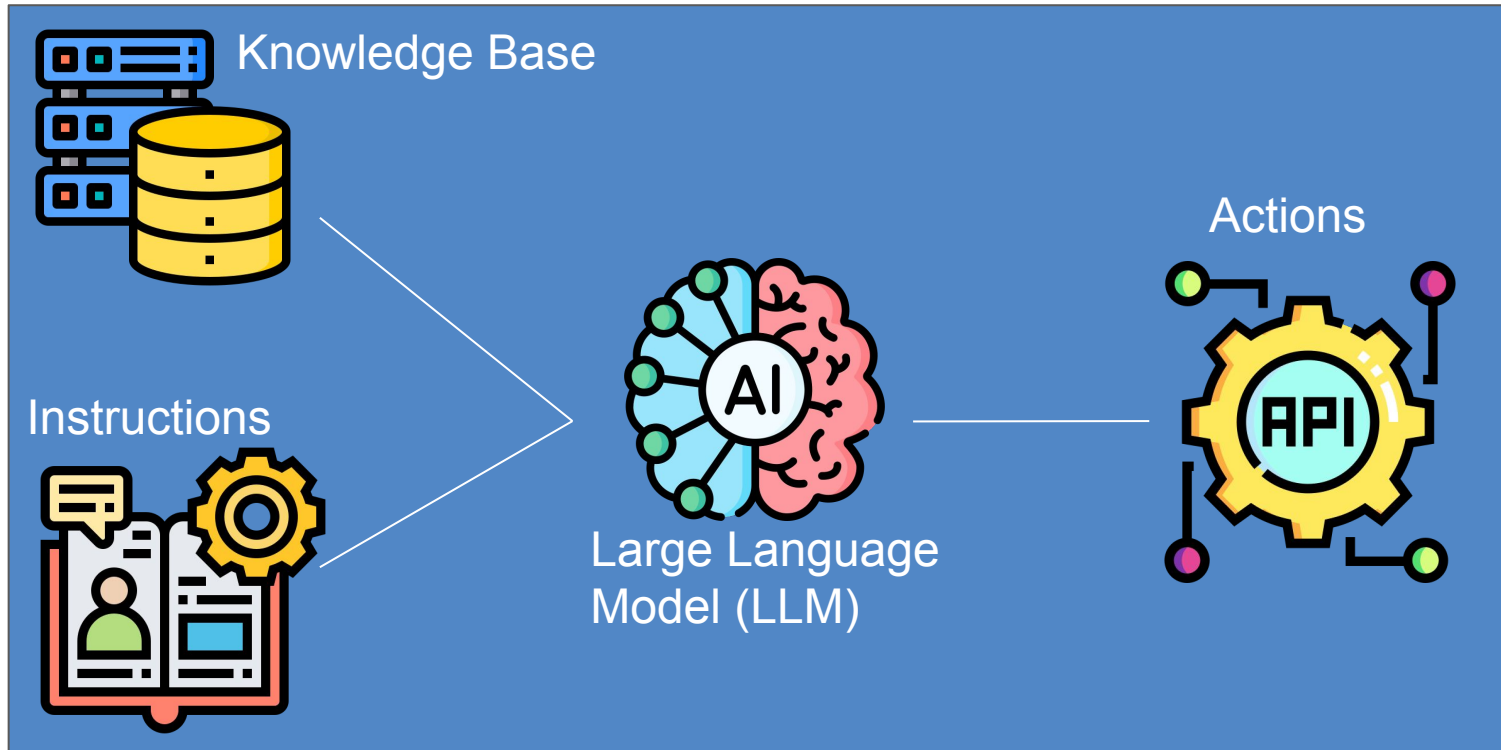
AI Models
E.g. LLM



DB /
Backend



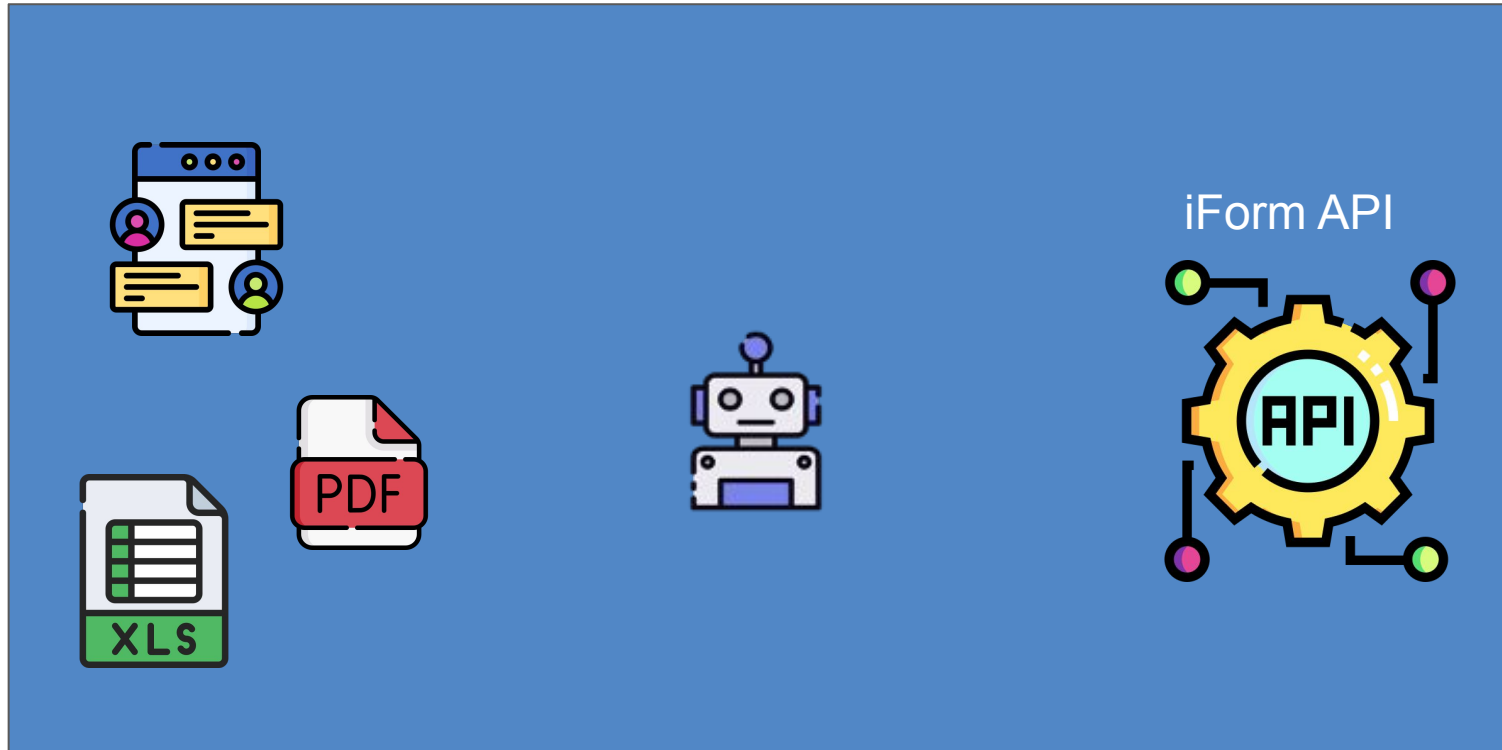
Agent



- **Form Building Agent**
- **Data Collection Agent**
- **Process Automation Agent**



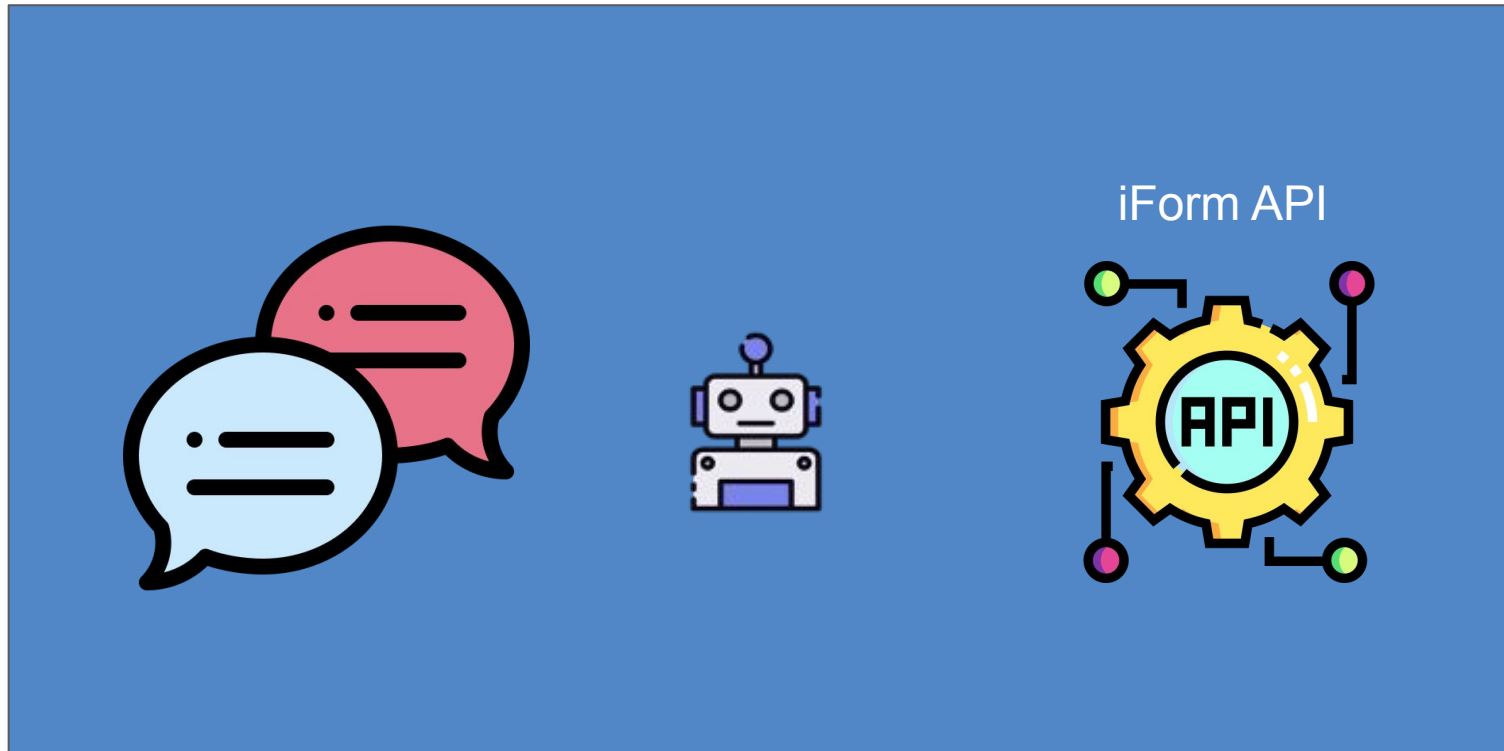
Form Building Agent



AI Form Builder Demo: A new way to build forms



Data Collection Agent



Conversational Data Collection Demo: Contact Form

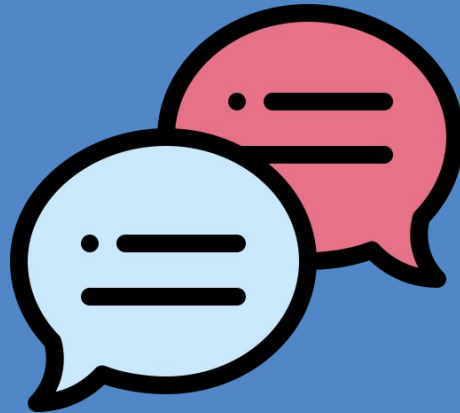


Conversational Data Collection: Efficiency



Process Automation Agent

Conversational AI



Critical Business Processes



Dataflow Automation

Dataflow Builder

Usage Statistics

Connections

Support

New Interface

Dataflow RecordSet

Search Dataflow by ID, Name, or Description

Dataflow Information

Name: Cow_Standard_Report_Document (601ae79b804be0c46eff8829)

Description: GET existing records, aggregate data, clean "other" values

Total Items: 17/65

Dataflow	Usage
document_requests	5840
1_page_doc	4880
2_page_doc	547
3_page_doc	307
4_page_doc	115
wh_test_document	0
test_document	0
create_test_document	0
Event_TEST	4880
rs_event_test	4880
wh_JUNK	0
JUNK	0

Data Pre-processing Job: x

Step 1 - Sample Data

Step 2 - Config

and + Add Condition + Add Group - Remove Group

Transformation

Default Transform Custom Transform

Transform Code:

```

1 var form_name = 'vacation_request';
2
3 var meta_fields = ['ID','PARENT_RECORD_ID','PARENT_PAGE_ID','PARENT_ELEMENT_ID','CREATED_DATE','CREATED_BY','CREATED_LOCATION','CREATED_DEVICE_ID','MODIFIED_DATE',
4   'MODIFIED_BY','MODIFIED_LOCATION','MODIFIED_DEVICE_ID','SERVER_MODIFIED_DATE'];
5
6 var obj = {};
7 obj['meta'] = {};
8 obj[form_name] = {};
9
10 for(var key in record) {
11   if (key=="CREATED_LOCATION" || key=="MODIFIED_LOCATION"){
12     //Convert to lat,lon object
13     l = record[key].split(':');
14     if (l.length>3) {
15       var lat = parseFloat(l[0]);
16       var lon = parseFloat(l[1]);
17       obj['meta'][key] = { "lat":lat, "lon":lon};
18     } else {
19       obj['meta'][key] = null;
20     }
21   } else if(meta_fields.indexOf(key.toUpperCase()) >= 0) {
```

Transform Return:

obj

Step 3 - Preview

Cancel Save

Location: AU			Template code			AU APR 24	US APR 24	UK APR 24
Range effective date: April 24			Total QTY per barset			1909	1978	1794
Category	Item Number	ItemName	Retail Value	Retail Value GBP	Cost price EUR	QTY	QTY	QTY
Accessories	RPAC904352	Carbon Black Wallet	66.25	£45.22	43.01	6	2	0
Accessories	RPAC497269	Carbon Black Wallet UK	57.79	£6.16	12.53	15	17	5
Accessories	RPAC277106	Gents Sports Watch	92.1	£15.22	39.11	4	13	4
Accessories	RPAC413037	Gents Sports Watch UK	24.37	£53.60	23.99	10	1	5
Accessories	RPAC643994	Ladies Sports Watch	53.42	£47.69	12.73	9	3	3
Accessories	RPAC684961	Ladies Sports Watch UK	49	£57.49	22.82	2	19	3
Accessories	RPAC242789	Keychain Accessory	65.34	£41.91	10.37	16	9	2
Accessories	RPAC722585	Keychain Accessory UK	23.98	£43.24	19.03	18	19	0
Accessories	RPAC231755	Bracelet with Charms	79.4	£1.50	19.65	8	13	0
Accessories	RPAC210913	Bracelet with Charms UK	7.77	£25.66	44.03	2	15	5
Accessories	RPAC904352	Elegant Earrings	33.22	£10.92	44.79	6	5	0
Accessories	RPAC497269	Elegant Earrings UK	89.17	£28.63	27.94	6	18	5
Accessories	RPAC277106	Gift Bag	13.7	£16.66	36.83	20	0	3
Accessories	RPAC413037	Gift Bag UK	7.36	£31.96	11.23	3	16	4

ID	Category	Item Code	Item	Retail Price	Standard Quantity	Customer	Customer Range	Retail Price Te
5	18963 Accessories	RPAC904352	Carbon Black Wa	66.25		6 AU	APR 24	2.08
6	18960 Accessories	RPAC497269	Carbon Black Wa	57.79		15 AU	APR 24	2.08
7	18957 Accessories	RPAC277106	Gents Sports Wa	92.1		4 AU	APR 24	2.08
8	18954 Accessories	RPAC413037	Gents Sports Wa	24.37		10 AU	APR 24	2.08
9	18951 Accessories	RPAC643994	Ladies Sports W	53.42		9 AU	APR 24	4.5
0	18948 Accessories	RPAC684961	Ladies Sports W	49		2 AU	APR 24	4.5
1	18945 Accessories	RPAC242789	Keychain Access	65.34		16 AU	APR 24	1.95
2	18942 Accessories	RPAC722585	Keychain Access	23.98		18 AU	APR 24	1.95
3	18939 Accessories	RPAC231755	Bracelet with Ch	79.4		8 AU	APR 24	1.95
4	18936 Accessories	RPAC210913	Bracelet with Ch	7.77		2 AU	APR 24	1.95
5	18933 Accessories	RPAC904352	Elegant Earrings	33.22		6 AU	APR 24	3.19
6	18930 Accessories	RPAC497269	Elegant Earrings	89.17		6 AU	APR 24	1.95
7	18927 Accessories	RPAC277106	Gift Bag	13.7		20 AU	APR 24	1.95
8	18924 Accessories	RPAC413037	Gift Bag UK	7.36		12 AU	APR 24	1.69
9	18921 Accessories	RPAC643994	Wireless Earbud	89.51		24 AU	APR 24	1.95
0	18918 Accessories	RPAC684961	Wireless Earbud	57.04		8 AU	APR 24	1.95
1	18915 Accessories	RPAC242789	Pearl Bracelet	70.82		8 tapbarcode	Airbus	1.69

1. Extract data starting from row 3. Use the original column names.
2. Here are the mapping from headings to the new output columns:
 - ID-> leave empty
 - Category -> Category
 - Item Code -> Item Code TS5
 - Item Name -> Item Name
 - Retail Price -> Retail Value (not Retail Value GBP)
 - Standard Quantity -> the first QTY column
 - Customer -> "AU"
 - Customer Range -> "APR 24"
 - Retail Price2 -> Retail Value GBP

Are there any tasks that are boring, tedious, repetitive, and require very little cognitive function to do?

Shall we automate them to free up your time?



DEMO



Data Collection: License Plate Capture and Automation



POLL



QUESTIONS



